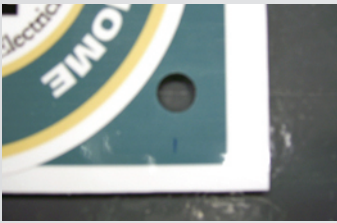


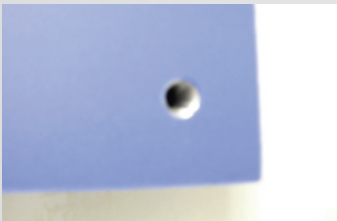
Through-Sign Wall Mount Stand-off



Each stand-off set includes stand-off, threaded cap, screw, and wall anchor.



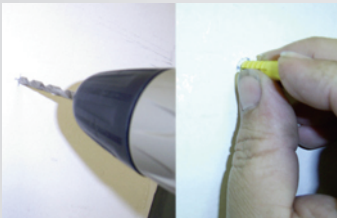
Sign mounting holes are pre-drilled.



1: Have a helper hold the sign to the wall where you want to mount it. Be sure the sign is level and exactly where you want it. Mark the locations of the pre-drilled mounting holes on the wall.



2: Find and mark the center of the circle (which is the center of the mounting holes on the sign)



3: Drill a 1/8" Pilot hole for the screws. If mounting in a hollow area of the wall, drill 1/4" holes and insert the included plastic wall anchors.



4: Use a #2 Phillips screwdriver to screw the stand-off to the wall using the included screws.



5: Screw the cap into the stand-off and hand tighten.